

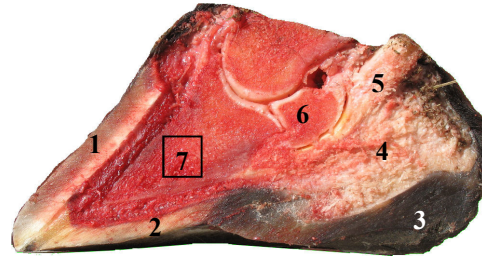
The coffin bone has fooled humanity for too long.

The coffin bone has fooled humanity for centuries.

In most books about horses and hooves you can find this view of the inside of the hoof.

You can see:

1. Toe wall
2. Sole
3. Frog
4. Digital cushion
5. Deep Digital Flexor Tendon (DDFT)
6. Navicular bone
7. Coffin bone



It is a good picture of every thing but the coffin bone. It is easy to believe that this is what the coffin bone looks like, and a lot of people do. There is nothing really wrong with the coffin bone in the picture but remember that it is cut in half. Let's isolate the coffin bone and check it out a little more thoroughly from different directions.



Front view



Top view

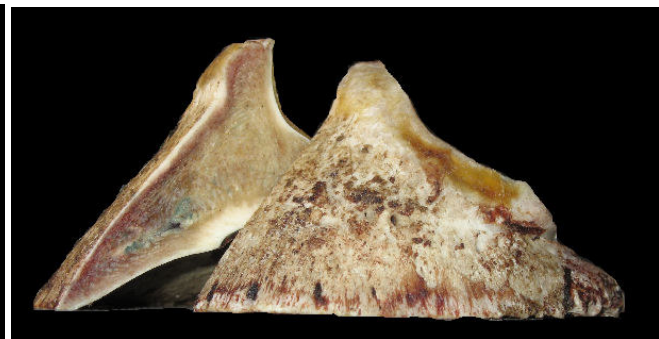


Slightly raised side view



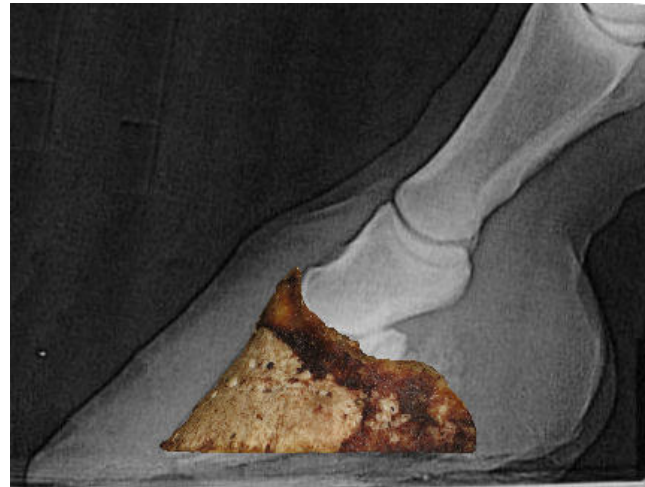
Side view slightly from behind

The first picture below shows a whole coffin bone sawed in the middle. The second and third



pictures show what it looks like when we slide the halves apart. You can clearly see that the outskirts of the coffin bone still is ground parallel and that the top picture only showed us the **thickness** of the coffin bone.

If we look at x-rays of hooves it is almost impossible to be sure what the picture shows because it is completely up to how much x-rays we did let go through the hoof. Too much x-rays and all



the thin parts of the bones disappear and we only see the thickness of the middle part of the coffin bone. Not enough x-rays and the picture will be full of “shadows” which will make it



very hard to determine what is what. The sad thing is that a lot of people judge the angle of the coffin bone from an x-ray picture. The only angle you possibly can measure from an x-ray is the angle between the hoof wall and the coffin bone and that angle doesn't say anything about the angle of the coffin bone as you can see on the two pictures above. They measure the angle between the front part of the coffin bone and the hoof wall and use it to determine if the coffin bone has the right angle even though the hoof wall is so soft it sometimes hardly even show on x-ray.

The hoof wall is just a nail (or a fender) it is there to protect the sensitive inner part of the hoof from physical violence from the outside. The hoof wall can take on any size or shape when affected by unnatural forces.



You can naturally not decide anything about the coffin bone from the shape of the hoof wall.

Ove Lind
Swedish Hoof School Inc.
www.SwedishHoofSchool.com